

# MONTHLY MEMBERSHIP PROGRESS REPORT

LOCATION SOUTH CAROLINA

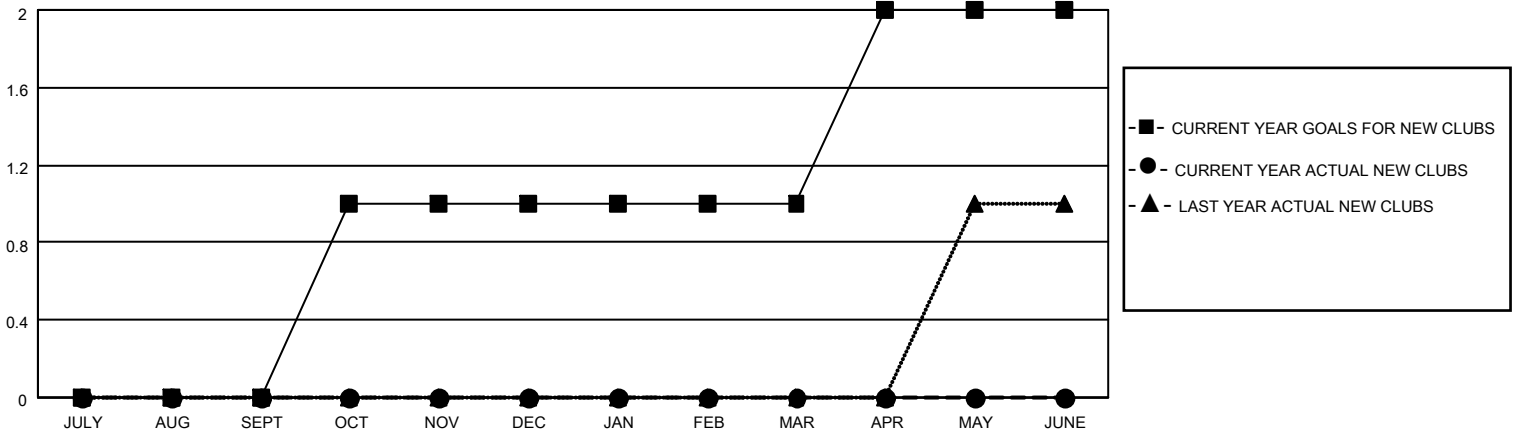
District 32 S

Results as of: 5/31/2023

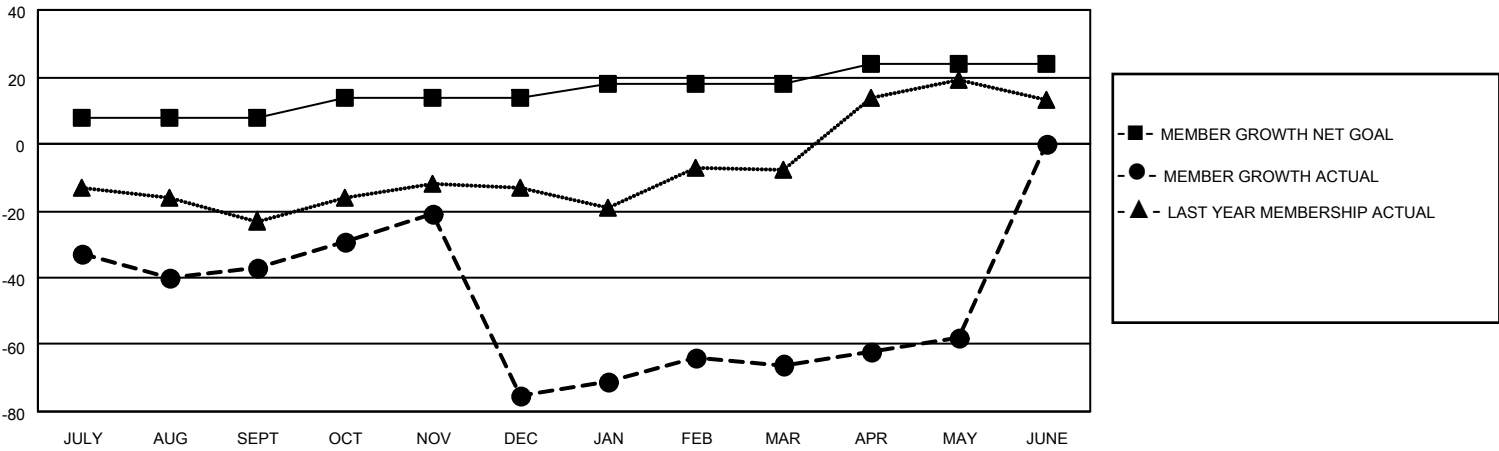
Clubs			
RESULTS FOR 2022-2023			
QUARTER	NEW CLUB GOAL	NEW CLUBS	DROPPED CLUBS
JULY/AUG/SEPT	0	0	1
OCT/NOV/DEC	1	0	1
JAN/FEB/MAR	0	0	0
APR/MAY/JUNE	1	0	0

Members			
RESULTS FOR 2022-2023			
QUARTER	MEMBER GROWTH NET GOAL	MEMBER GROWTH ACTUAL	DROPPED MEMBERS ACTUAL (including transfers)
JULY/AUG/SEPT	8	57	89
OCT/NOV/DEC	6	56	91
JAN/FEB/MAR	4	47	38
APR/MAY/JUNE	6	36	26

**GOALS AND ACTUAL NEW CLUBS CUMULATIVE**



**GOALS AND ACTUAL MEMBERS CUMULATIVE**



**DROPPED CLUBS: 2**

41 CLUBS OF 63 ADDED 1 OR MORE NEW MEMBERS

GENDER DISTRIBUTION

MALE	1,016 (61.88%)
FEMALE	626 (38.12%)
NON BINARY	0 (0.00%)
PREFER NOT TO ANSWER	0 (0.00%)

DROPPED MEMBERS

[CLICK HERE FOR CUMULATIVE MEMBERSHIP DATA](#)

DECEASED	48
CLUB CANCELLED	13
OTHER	183
<b>TOTAL</b>	<b>244</b>

TOTAL FAMILY UNIT MEMBERS	383
FAMILY MEMBERS PAYING HALF DUES	195